



OSPI / Extempore Custom Tests Administrator Handbook 2022-23 School Year

Contact Information



Veronica Trapani

*Associate Director – Content, World Languages and International
Education, Secondary Education and Pathways Preparation
Office of Superintendent of Public Instruction (OSPI)*

Phone: (360)-819-0950

Email: veronica.trapani@k12.wa.us



Abbai Habte

Extempore Point of Contact

Phone: (612) 230-2487 (call or text)

Email: abbai.habte@extemporeapp.com

[Click here to book a meeting with Abbai](#)

Table of Contents

Page 1: Contact Information & Table of Contents

Page 2: Custom Tests Overview

Page 3: Custom Tests Workflow

Page 4: Available languages for Custom Test

Page 5: How to Request & Facilitate OSPI Custom Tests

- Requesting an Extempore MN Seals Assessment
- Scheduling Training
- How to Facilitate Assessment
- What Happens After Test is Done?

Page 6: Technical Questions/Procedures & Extra Resources

Page 7: What is Extempore?

OSPI Custom Testing for Super Less Commonly Taught Languages

The Office of Superintendent of Public Instruction (OSPI) is pleased to continue the service started by the Washington Association for Language Teaching (WAFLT) to offer Custom Testing for languages that are not currently supported by the major testing companies that offer testing for Competency-Based Credits for World Languages in Washington. OSPI will continue collaborating with WAFLT to provide the opportunity for Custom Testing to as many students as possible in the state of Washington.

We are also excited to announce that Washington state is moving to [Extempore, The Speaking Practice App](#) as the platform for delivering “Custom Tests” for Less Commonly Taught Languages for World Language Credit Testing and the State Seal of Biliteracy.

Please carefully review all information in this handbook before requesting an OSPI Custom Test, and please coordinate with other administrators at your district or school to avoid duplicate requests.

OSPI Custom Tests Overview

The Custom Test consists of two parts:

1.) Oral Language (Speaking) Test

- The Oral Language (Speaking) test will consist of 3 prompts (in English)
 - 1.) Students will access each individual prompt through the Extempore Platform
 - 2.) Students will then submit an audio recording of their response through Extempore
 - 3.) Students will be able to watch/listen back to their response and re-record if necessary

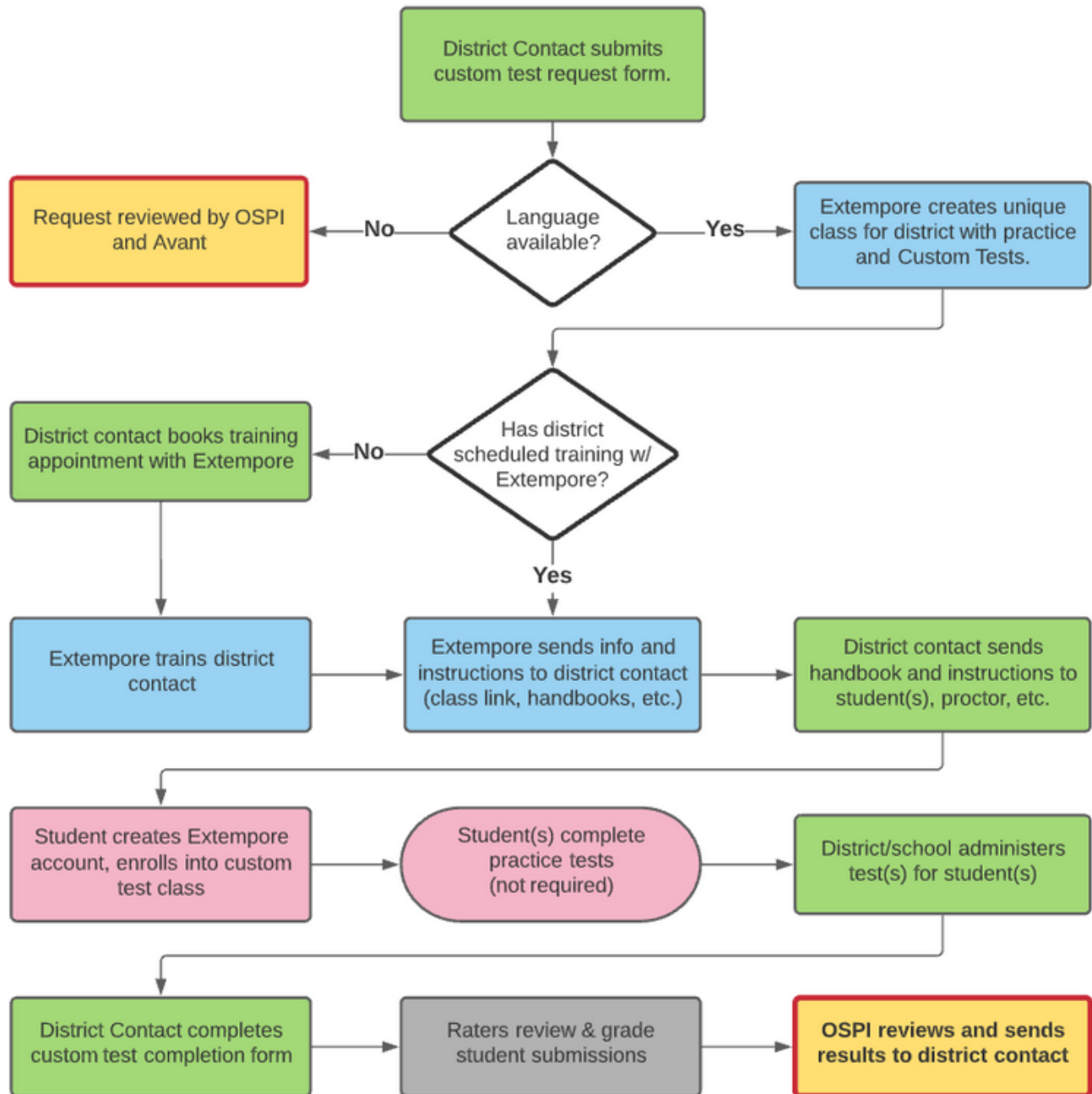
2.) Writing Test

- The writing test will consist of 3 prompts (in English)
- **Students will have the option to either type their responses online OR write their responses long-hand.** (*Accessibility to online keyboard may vary depending on language*)
 - **For languages with an online keyboard:**
 - 1.) Students will access each individual prompt through the Extempore Platform
 - 2.) Students will then change their keyboard to appropriate language and type their response
 - **For handwritten responses (languages without an online keyboard):**
 - 1.) A PDF of the writing prompts will be provided to administrators/proctors
 - a. This is to be printed at the test site and provided to the student
 - 2.) Students will access each individual prompt through the Extempore Platform and submit "Completed via hard copy." This will allow the raters to grade the submission online after viewing the handwritten response.

Students are expected to read and revise their written responses to check for accuracy and coherence and to listen to their oral language recordings to check for audibility and accuracy and coherence. There are not separate Reading and Listening components for the Custom Tests at this time. The prompts for the Custom Tests were developed in collaboration with Avant based on prompts previously provided and used on STAMP tests.

After the students complete the Writing Test and record the Speaking Test, language professionals from these less commonly taught/tested languages to evaluate the samples based on the [STAMP Rating Rubric](#) and determine how many high school credits the students should qualify for. After evaluations are complete, OSPI/WAFLT will produce letters with these results and email them to the district (or school) of the student being tested.

OSPI Custom Tests Workflow



Available Languages for Custom Tests

Due to limitations and access to raters for certain languages, OSPI is only able to accommodate custom tests for the languages listed in the table below at this time.

If you would like a custom test for a new language that is not listed below, please submit an online request, and we will contact you to discuss options.

We will do our best to accommodate all new requests in a timely manner, but unfortunately, we cannot guarantee that requests for new languages will be ready this school year.

We appreciate your patience and understanding.

Custom Tests are Available for the Following Languages

Bisaya/Visaya	Fijian	Mandinka	Quechua
Bengali	Gujarathi	Moldovan	Sanskrit
Cantonese	Hungarian	Palauan	Shona
Cebuano	Icelandic	Pangasinan	Swedish
Chamorro	Kapampangan/Pa mpango	Pohnpeian (Micronesia)	Tibetan
Danish	Kosraean	Punjabi	Tongan
Estonian	Malayalam	Q'anjob'al (Kanjobal)	Yapese

How-To Request & Facilitate an Extempore OSPI Custom Test

Step 1: Request an OSPI Custom Test

Please fill out and request for each language separately.

**[CLICK HERE TO REQUEST AN
OSPI CUSTOM TEST](#)**

Step 2: Schedule Training with Extempore

In an effort to ensure a good experience for all districts and students this school year, testing administrators are REQUIRED to schedule a Custom Test training session with Extempore prior to administering tests at their district. Use the form below to schedule your training session with Extempore today!

**[CLICK HERE TO SCHEDULE
TRAINING SESSION](#)**

Step 3: Facilitating the OSPI Custom Test

Upon submitting a custom test request, you will receive an email for each language requested from Abbai Habte or Lisa Parra Staves, your Extempore point of contact.

- What will be included in the email?
 - Link to the Extempore OSPI Custom Test and Practice Tests
 - Helpful resources for Administrator & Students
 - PDF copy of writing prompts
- What do I do with the Links?:

You will share the links with the student(s) taking the assessment so they can enroll in the class and complete the practice assessment at their convenience.

Step 4: What Happens After the Test is Done?

- Submit [Custom Test Completion Form](#) and upload copy of written responses (if applicable)
- Once everything is finalized, OSPI will notify testing contact of results

**[CLICK HERE TO SUBMIT
CUSTOM TEST COMPLETION FORM](#)**

Technical Questions & Procedures

- Have your IT Department Whitelist Extempore emails with the domain, @extemporeapp.com. If Extempore emails are not whitelisted this can cause issues when we are communicating back to students or administrators when help is needed.
- Extempore Is Assessable on, laptops, Chromebooks, Desktops, Ipads, Tablets, Smartphones, iPhones, Macs, essentially anything that has internet access.
- The preferred browser is Google Chrome, Extempore can also be used on Firefox, Internet Explorer, Safari, and etc... Although, Google Chrome is the most up-to-date to work with Educational Software.
- Links to Download Extempore APP:
 - [Apple Store](#)
 - [Google Play](#)

Extra Helpful Resources & Links

[Click to View OSPI/Extempore Landing Page Website](#)



Washington Office of Superintendent of
PUBLIC INSTRUCTION



extempore
The Speaking Practice App

[Click to View & Download Student Handbook](#)

Student Handbook



Washington Office of Superintendent of
PUBLIC INSTRUCTION



extempore
The Speaking Practice App

What is Extempore?

Extempore, The Speaking Practice App is an online platform designed specifically for the language classroom. It offers the flexibility to support practice and assessment for all modes of communication, at all levels of proficiency, in ANY language, and in a way that is convenient for the teacher and the student. Creating more reading, listening, writing, and speaking opportunities to help reach the goal for your students to communicate effectively in a diverse society.

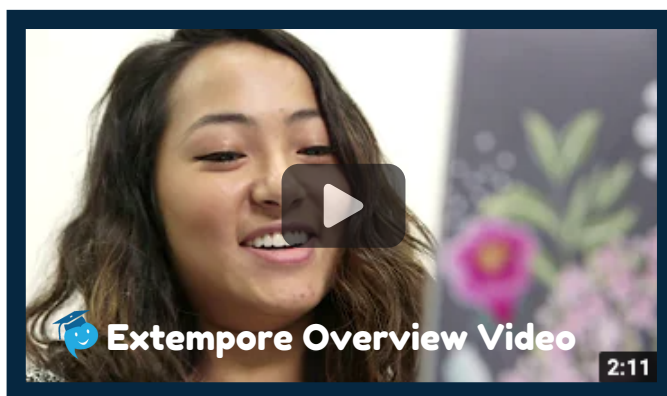
For this reason, Extempore was the clear choice to serve as the new platform for facilitating OSPI custom tests to students in Washington, and to lay the foundation for us to continue adding more languages for testing in the future.

Extempore is an excellent resource to use in the classroom! It helps teachers extend the classroom to generate more speaking opportunities for students, incorporate more real-world and engaging tasks into lesson plans, and helps prepare students for high stakes exams like AP, STAMP, or Seal of Biliteracy tests.

For more information about Extempore, please check out the resources below!

Useful Links:

- [Extempore Website](#)
- [Extempore Overview PDF](#)
- [How it Works](#)



Special Offer!

Extempore is offering department trainings and free school pilots to school districts in Washington State for the remainder of the 2022-23 school year.

This will allow your students and teachers to get comfortable with the tool before using Extempore for OSPI Custom Tests.

**Click here to create
your Extempore Account**

**Click here to schedule time
with an Extempore Rep**